
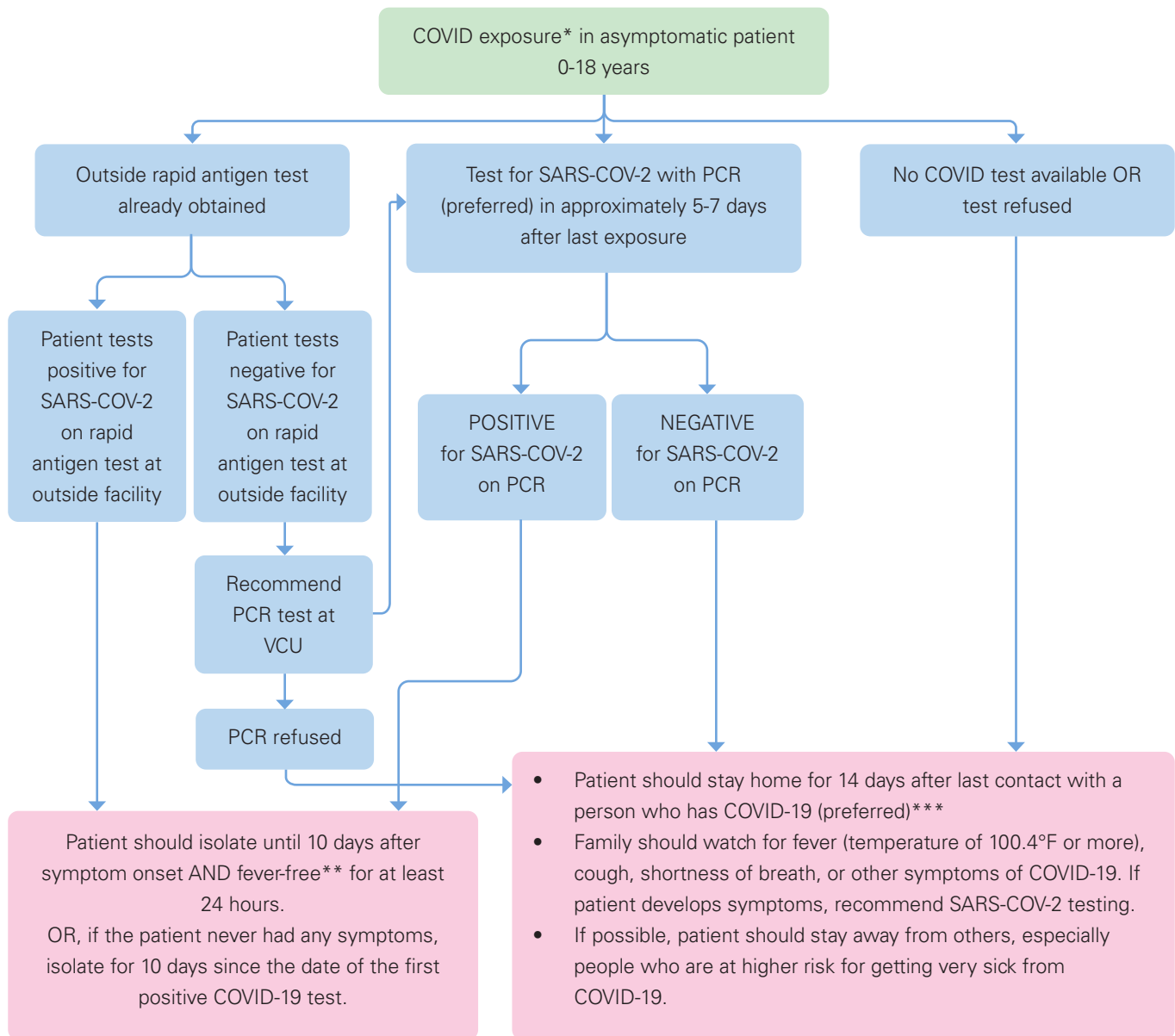


Clinical Guideline

COVID exposure

 This guideline should not replace clinical judgment.

Pediatric Outpatient and Emergency Medicine



*Patient was within 6 feet of someone who has COVID-19 for a total of 15 minutes or more (within a 24 hour period), provided care at home to someone who was sick with COVID-19, had direct physical contact with the person (hugged or kissed them), shared eating or drinking utensils with the person or someone with COVID-19 sneezed, coughed, or somehow got respiratory droplets on the patient. A person with COVID-19 is considered to be contagious starting from 2 days before they became sick (or 2 days before they tested positive if they never had symptoms) until they meet the criteria to discontinue isolation.

** Fever-free means a temperature of less than 100.4 degrees F without anti-pyretics.

*** If patient is not able to stay home for 14 additional days and **does not have symptoms**, they may leave home earlier:
After 10 days without testing; or
After 7 days with a negative PCR or antigen test performed 5 days or later after last exposure

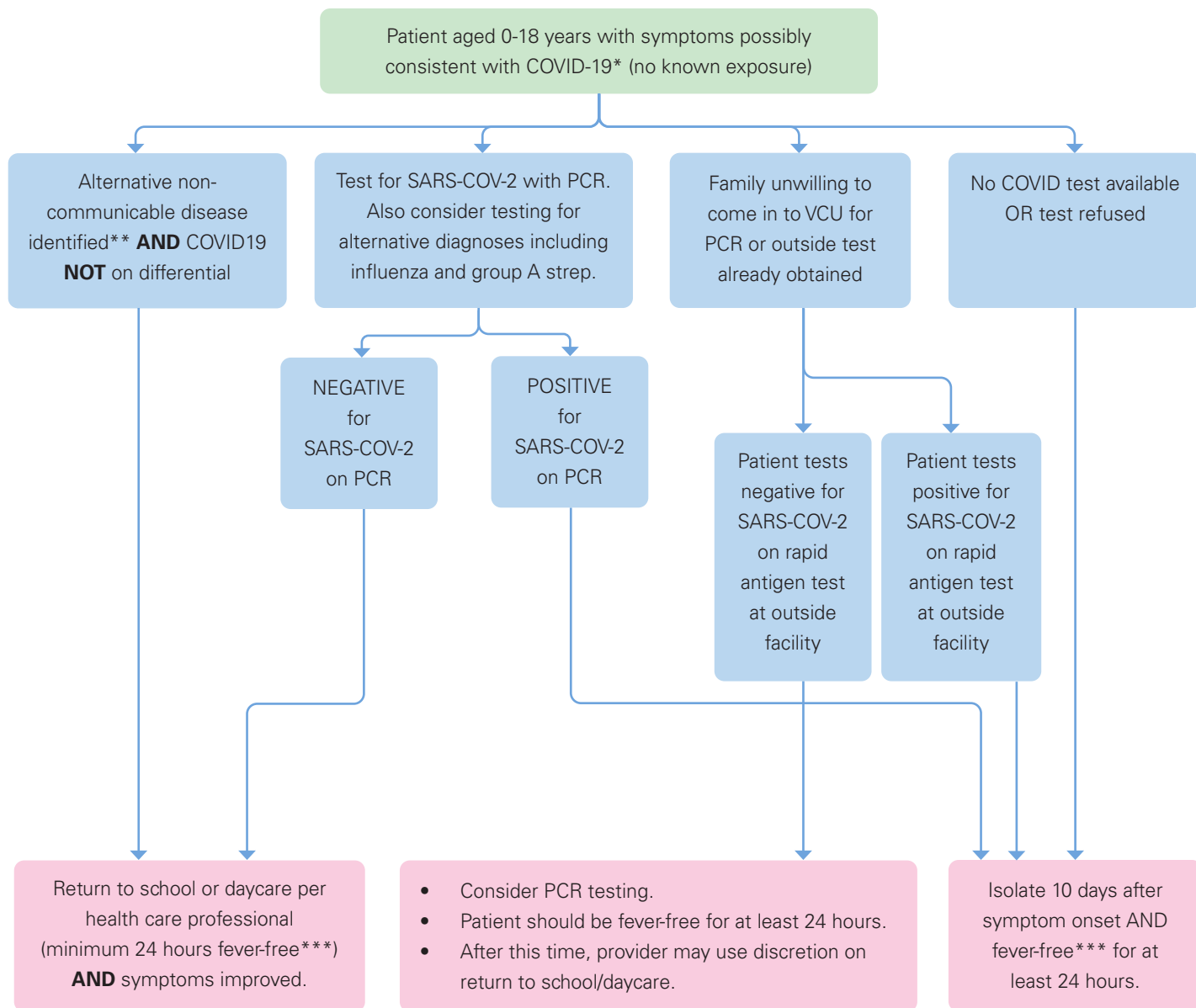
For children previously diagnosed with COVID-19 who remain asymptomatic after recovery, retesting is not recommended within 3 months after the date of symptom onset for the initial COVID-19 infection.

Clinical Guideline

 This guideline should not replace clinical judgment.

COVID testing

Pediatric Outpatient and Emergency Medicine



*Symptoms possibly consistent with COVID19: fever/chills/rigor, nasal congestion/runny nose, sore throat, cough, difficulty breathing, myalgias, nausea/vomiting/diarrhea, loss of taste or smell or new onset poor feeding or poor appetite.

** E.g. urinary tract infection. Diagnoses of influenza, acute otitis media and pneumonia should not exclude COVID-19 as these diagnoses can co-exist.

*** Fever-free means a temperature of less than 100.4 degrees F without anti-pyretics.

Retesting for COVID-19 is not recommended for 3 months after the date of onset of initial symptoms. For persons who develop new symptoms consistent with COVID-19 during the 3 months after the date of initial symptom onset, if an alternative etiology cannot be identified by a provider, then the person may warrant retesting.

COVID-19 Testing Guideline

Executive Summary

Children's Hospital of Richmond at VCU COVID-19 Testing Workgroup

General Pediatrics Owner: Elizabeth Wolf, MD, MPH

Pediatric Infectious Disease: Emily Godbout, DO, MPH

Approved (December 2020)

Chief of General Pediatrics:

N. Romesh Wijesooriya, MD

Chief of Pediatric Infectious Diseases:

Suzanne R. Lavoie, MD

Chief of Pediatric Emergency Medicine:

Frank Petruzella, MD, MS

CHoR Emergency Medicine Quality Committee:

Rashida Woods, MD

CHoR Clinical Guidelines Committee:

Jon Silverman, MD, MPH

Ashlie Tseng, MD

CHoR Quality Council, Executive Sponsor

Matthew Schefft, DO, MSHA

Dory Walczak, MS, RN, NE-BC, CPHQ

References

Coronavirus Disease 2019 (COVID-19): Contact Tracing. Centers for Disease Control and Prevention. <https://www.cdc.gov/coronavirus/2019-ncov/php/open-america/contact-tracing/index.html>. Published 2020. Accessed November 24th, 2020.

Coronavirus Disease 2019 (COVID-19): Duration of Isolation and Precautions for Adults with COVID-19. Centers for Disease Control and Prevention. <https://www.cdc.gov/coronavirus/2019-ncov/hcp/duration-isolation.html>. Published 2020. Accessed November 24th, 2020.

Coronavirus Disease 2019 (COVID-19): Testing. Centers for Disease Control and Prevention. <https://www.cdc.gov/coronavirus/2019-ncov/php/open-america/testing.html>. Published 2020. Accessed November 24th, 2020.

Coronavirus: What to do if you were potentially exposed to coronavirus disease (COVID-19)? Virginia Department of Health. <https://www.vdh.virginia.gov/coronavirus/local-exposure/>. Published 2020. Accessed November 26th, 2020.

COVID-19 Planning Considerations: Guidance for School Re-entry. American Academy of Pediatrics. <https://services.aap.org/en/pages/2019-novel-coronavirus-covid-19-infections/clinical-guidance/covid-19-planning-considerations-return-to-in-person-education-in-schools/>. Published 2020. Accessed November 26th, 2020.

COVID-19 Testing Guidance. American Academy of Pediatrics. <https://services.aap.org/en/pages/2019-novel-coronavirus-covid-19-infections/clinical-guidance/covid-19-testing-guidance/>. Published 2020. Accessed November 26th, 2020.

Li Q, Guan X, Wu P, et al. Early Transmission Dynamics in Wuhan, China, of Novel Coronavirus-Infected Pneumonia. *New England Journal of Medicine*. 2020;382(13):1199-1207.

Citation

Title: **COVID-19 Testing Guideline**

Authors:

Children's Hospital of Richmond at VCU

Elizabeth Wolf, MD, MPH

Emily Godbout, DO, MPH

Date: **December 2020**

Retrieval website: **<http://www.chrichmond.org/clinical-guideline-COVID-19-Testing>**

Example:

Children's Hospital of Richmond at VCU, Wolf E, Godbout E. COVID-19 Testing Guideline. Available from:

<http://www.chrichmond.org/clinical-guideline-COVID-19-Testing>